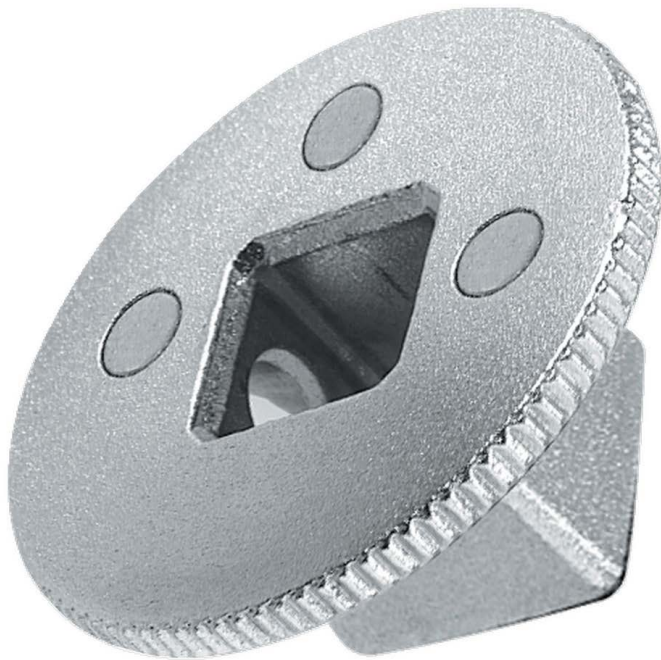


D.169 Set of 3 couplers**Description:**

- Allows use of square drivers smaller than socket drive sizes:
 - 1/4" square drive + D.169RJ --> 3/8" socket.
 - 3/8" square drive + D.169JS --> 1/2" socket.
 - 1/2" square drive --> 3/4" socket.
 - Compactness means that fewer tools are needed for in situ maintenance operations.
 - Magnetic retainer and locking system (JS and SK).
 - Knurl allows hand tightening where access is difficult.
- Weight: 96 g.